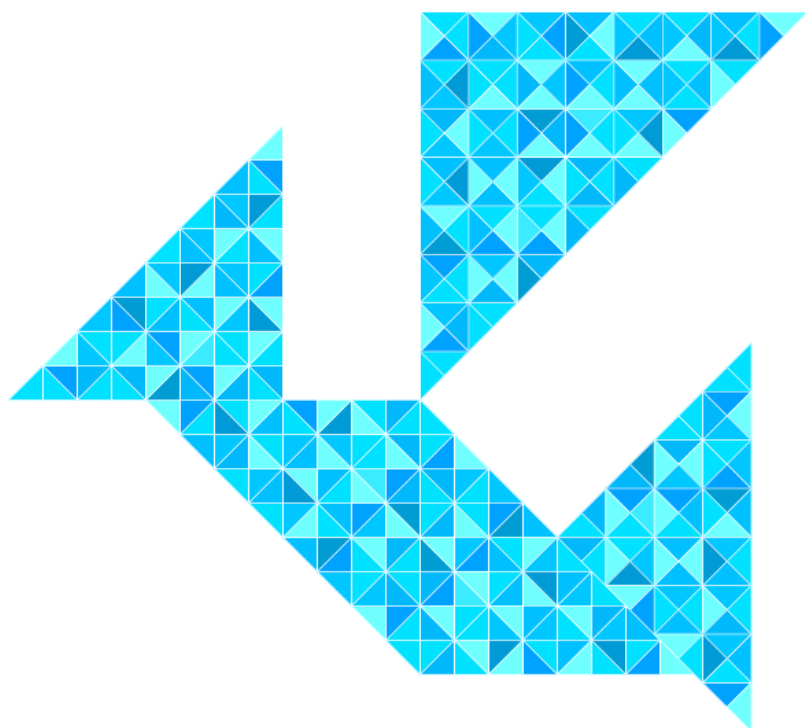


# Installation guide for Birdie



Total surfaces:

**6**

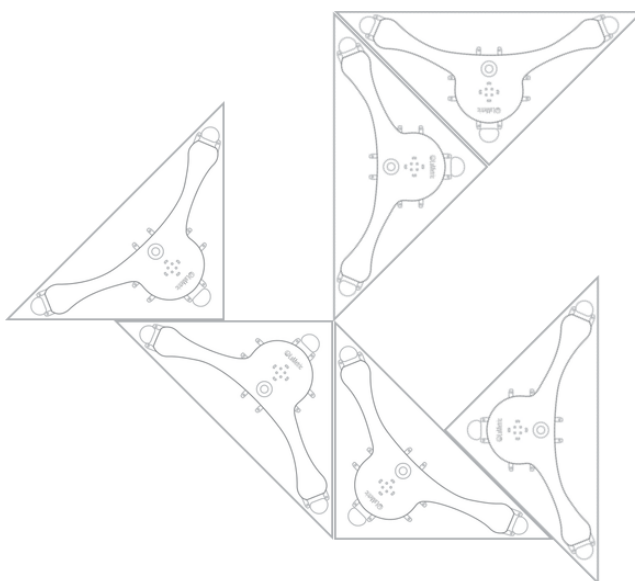
Width:

**23.23 in**

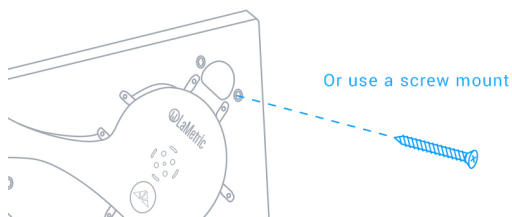
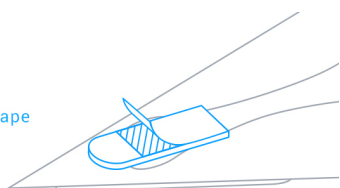
Height:

**20.87 in**

# 1. Mount



Use double-sided tape



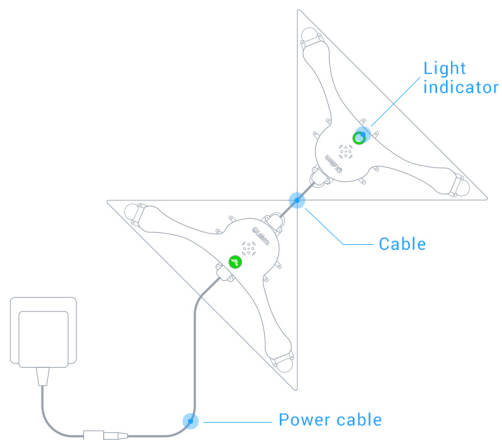
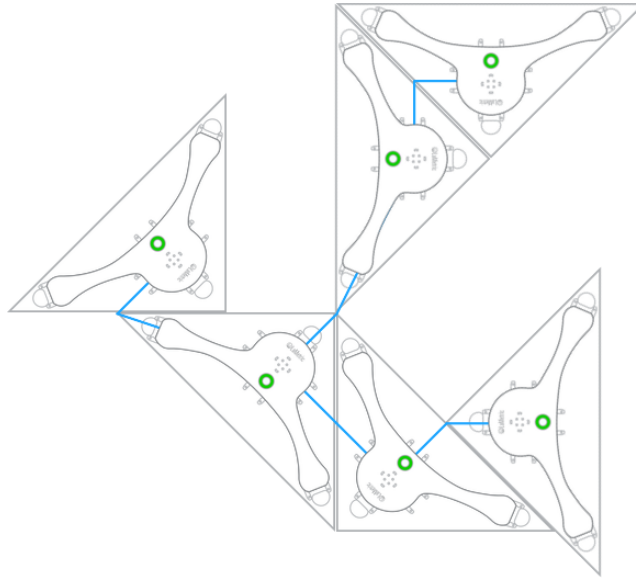
Or use a screw mount

Once you decide on a design in the shape catalog, mount it on the wall:

- Take a water level, pencil and roulette and make the marks on the wall in order to be able evenly attach the cable splitters
- Clean the surface thoroughly using rubbing alcohol or water and let it dry
- Attach three double-sided tapes to the rear side of each cable splitter
- Attach every cable splitter to the wall
- When placing cable splitter on the wall, press and hold for 30 seconds

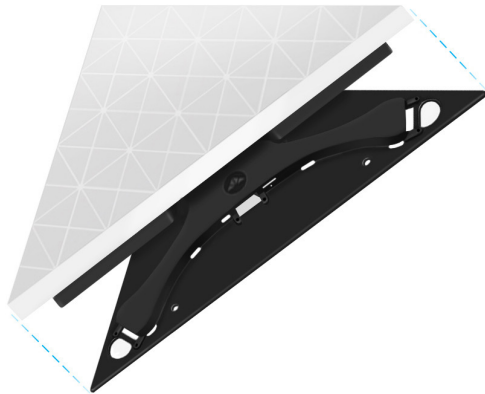
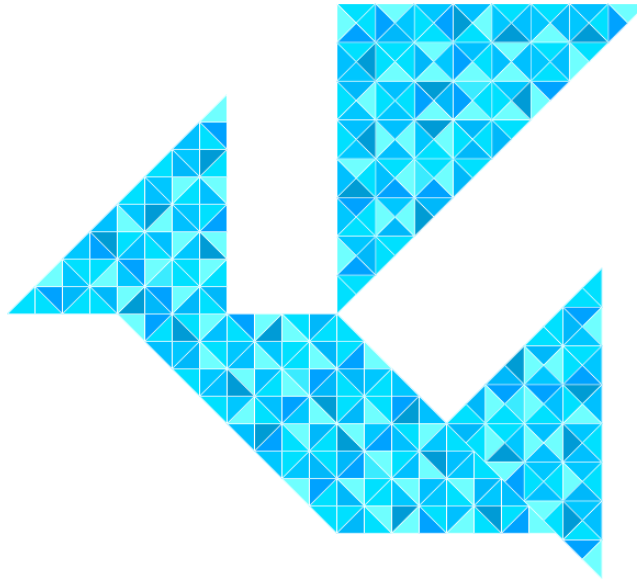
For wood texture and wallpapers, it's recommended to use a screw mount (screws are not included).

## 2. Connect



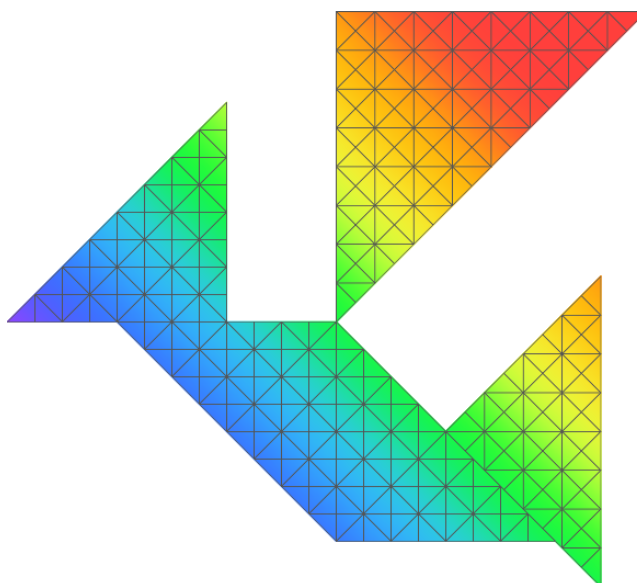
- Connect the cable splitters with cables like it is shown in the picture above
- Connect the power cable to one of the free ports of any cable splitter
- Plug the SKY in
- Make sure that the light indicator on each cable splitter emits a green light
- Unplug the SKY

### 3. Cover up



- Cover up cable splitters with light surfaces
- Plug the SKY in
- You did a great job!

## 4. Setup



Setup your SKY via the LaMetric iPhone or Android smartphone app to:

- Use your smartphone as a remote
- Control brightness and schedule on/off settings
- Enjoy vibrant effects or informational apps
- Enable voice control via Amazon Alexa or Google Assistant
- Utilize one-button control and automatic brightness adjustment in combination with LaMetric TIME
- Create an ambient atmosphere in sync with the screen of your computer
- Connect to Homey, IFTTT, Razer Chroma, or Home Assistant

If you need any help during the installation process, don't hesitate to contact our Support Team at **[support@lametric.com](mailto:support@lametric.com)**